

MicroLite

The plug & record mini data logger

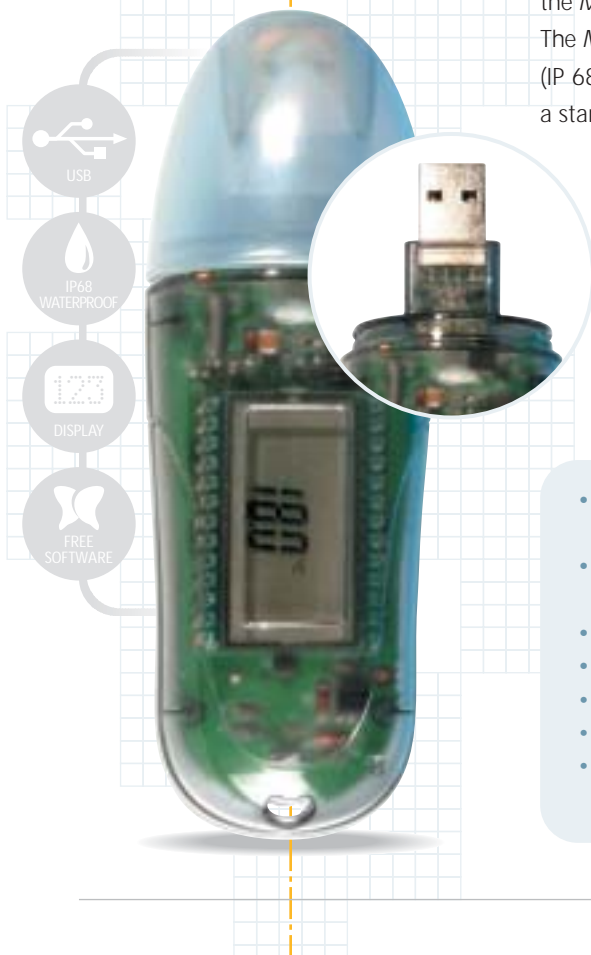


Aesthetic and innovative, *MicroLite* is a small data logger for monitoring and recording temperature. *MicroLite* is the ultimate plug and record data logger. Despite the compact design, *MicroLite* data is clearly displayed on the logger's numeric screen. In addition, the *MicroLite* stored data can be downloaded automatically to the *MicroLab Lite* software. The *MicroLite* has been dustproof and waterproof tested to meet highest market standards (IP 68). To further ensure easy global usage, the battery is easily replaceable since it is a standard model used worldwide.

MicroLite works with *MicroLab Lite* software, which can be downloaded for free directly from the Fourier Systems Ltd. website: www.fouriersystems.com.

The product is designed for ultimate application accessibility, whether mobile or static. Typical applications for this product include transportation as well as warehousing of food, drugs and hi-tech equipment.

- High functionality yet low cost enabling use as one-trip logger
- High resolution 16-bit (0.1°C) data logger
- Range -40°C to 80°C
- High accuracy 0.3°C
- 16,000 sample memory
- High sampling rate of 1 per second
- Long life battery using NanoWatt technology
- USB 2.0 interface enabling fast track communication
- LCD display with decimal point reading
- Magnet key to activate logging
- Min/Max and alarm level readings
- Built-in real-time clock and calendar
- Complimentary MicroLab Lite analysis software



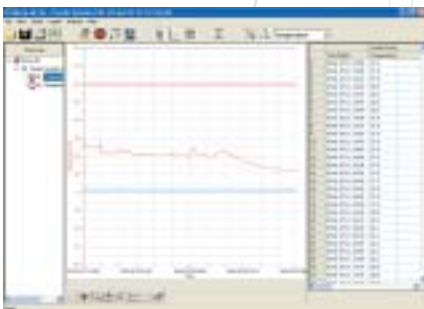


Specifications



Internal Sensor	Temp: -40 to 80 °C Standards compliance: > Dust and Waterproof IP68 > Thermal conductor enabling fast response time	Weight	45.5 gr
Outputs	USB 2.0 communication	Display	> LCD with decimal point > Visual Alert - Alarm icon when crossing predefined thresholds > Low battery indication
Sampling	Resolution: A/D resolution: 16-bit, 0.1°C Capacity: Memory capacity: 8KB, 16KB Sampling rate: 1 per second to 1 per 2 hours Accuracy: 0.3°C	Operation	> Data scroll on the LCD > Reed switch to start measuring
Power Supply	Battery life: > 2 years at 1 sample per minute > Replaceable 3V lithium battery CR2032	Software	> MicroLab Lite for Windows 98/2000/ME/XP/NT 4.0 or higher > Also available – DatPass 21 CFR Part 11 Standards Compliance Software
Design	Dimensions: > 11 x 3.9 x 2.6 cm > Strap-on capabilities	Standards Compliance	CE, FCC compliance
Ordering Information			
Item	Memory	P/N	
MicroLite	8,000 samples	LITE5008	
MicroLite	16,000 samples	LITE5016	

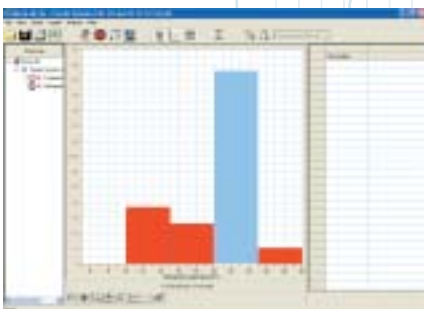
MicroLab Lite Software



MicroLite works with MicroLab Lite software whose features have been designed specifically in response to requests from the field enabling a broader and more complex range of application environments. Features include analysis functionality such as Statistics – maximum, minimum and average, enabling a quick glance summary of the environment and historical analysis. This is typically useful for applications requiring a constant bird's eye picture of the conditions their materials are kept in.

MicroLab Lite features

- Complete data analysis
- Downloads from MicroLite
- Graph and table displays
- Alarm levels per MicroLite displays
- Ability to set-up MicroLite
- Comments for each data logger
- Daily status reports in various formats



Advanced data analysis features

- Mean kinetic temperature, an expression of cumulative thermal stress in different temperatures during storage, transportation and distribution.
- Pasteurization provides analysis for the most common methods of pasteurization in Industry: High Temperature Short Time (HTST); Ultra Pasteurization (UP) and Ultra High Temperature (UHT) pasteurization.
- Histogram provides a graphical view of historical results presented according to defined parameters of periods of time and percentage levels. This provides a level of analysis which can be tailored to specific environment needs for an immediate picture.
- Annotation enables text to be placed on the graph at relevant points where certain information needs to be highlighted.
- Data records can be exported to your preferred spreadsheet application.
- GMT Recording - Set data recording to meet with GMT Greenwich Mean Time, for use in international environments, particularly export and import.